



# MARCHING CATALOG

# CONTENTS

## Mapex Marching Drums

### Quantum Mark II Series

- ▶ Snare Drums 3
- ▶ Bass Drums 5
- ▶ Tenor Drums 7

### Qualifier Series

- ▶ Snare Drums 12
- ▶ Bass Drums 13
- ▶ Tenor Drums 14

### Contender Series

- ▶ Snare Drums 15
- ▶ Bass Drums 16
- ▶ Tenor Drums 17

### Hardware & Finish Options

18

### Carriers

19

### Stands & Accessories

20

### Student Percussion Kits

21





## Quantum mkII

Quantum Mk II Marching Drums offers unique features found nowhere else. The Mapex SONIClear bearing edge design enhances a fundamental tone and makes tuning easier than ever. The lightweight connectors on the tenor drums add stability while reducing overall weight.

The revolutionary externally adjustable bass drum eyebolt facilitates easy, convenient adjustment. These forward-thinking appointments remind you that with Quantum Mk II, it keeps getting better.



# SNARE DRUMS

The Quantum Mark II family of marching snare drums includes the Classic and Agility models. The Quantum Mark II Classic Snare Drum features a six ply birch-maple blended shell for a warm overall sound, a unique snare bed that provides superior snare response, and a rugged full size design for maximum projection.



QAMX1410S



QCMX1412S

- Innovative new design features a quick release mechanism which enables the snares to be disengaged or detached to facilitate quick bottom head changes, requiring no readjustment of snare strand tension.
- Individual snare strands can be fine-tuned with a standard drum key and can also be easily removed or replaced with alternate strand materials to create a customized sound.
- A thinner shell with a hybrid mixture of birch and maple provides optimum balance between resonance and focus with the added benefit of reduced weight.

### Quick Release Mechanism

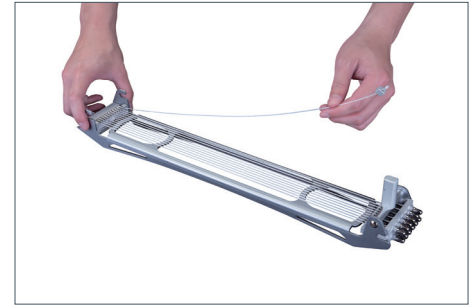


On



Off

### Individual Gut Adjustment



	CLASSIC	AGILITY
SHELL SIZES	14"x12"	14"x10"
MODEL	QCMX1412S-xx-CC (single snare drum)	QAMX1410S-xx-CC (single snare drum)
	QCMX1412S-xx-CC-F (single snare drum w/ high tension drum head)	QAMX1410S-xx-CC-F (single snare drum w/ high tension drum head)
SHELL MATERIALS	2.4mm Maple/1.7mm Maple/1.7mm Maple *2.75mm Olive Veneer over Maple/1.7mm Maple/1.7mm Maple	2.4mm Maple/1.7mm Maple/1.7mm Maple *2.75mm Olive Veneer over Maple/1.7mm Maple/1.7mm Maple
LUGS	12 lugs, suspension frame	12 lugs, suspension frame
SNARE HEAD	Remo UX Clear snare side head	Remo UX Clear snare side head

\*For 5 Lacquering Finishes: TK, DW, ET, HW, UM

See page 18 for more hardware and finish options.  
See page 19-20 for carrier and stands information.

# BASS DRUMS

Quantum Mark II Bass Drum features a maple shell and a consistent 14" shell depth throughout the lineup. New externally adjustable eyebolt system allows for easy eyebolt height adjustment to suit each individual player without removing drumheads.



- The six ply maple shell with SONIClear bearing edges provides a warm and full resonant tone with enhanced reinforcing rings for strength and durability.
- Externally adjustable eyebolt system to easily suit each individual player without removing drumheads.
- A specific number of airvents is featured on each model graduated through the bass drum line with a consistent focused tone and to attenuate the sustain.
- SONIClear bearing edge allows the drumhead to sit flatter and make better contact with the shell.



**SONIClear bearing edges**



**Adjustable eyebolt system**

Model	Shell Sizes	Shell Material	Bearing Edge	Hoops	Air Vents
QCMB1414	14"x14"	Maple w/ Birch Reinforcing Rings  *Olive Veneer over Maple w/ Birch Reinforcing Rings	SONIClear	Aluminum Alloy	2
QCMB1614	16"x14"				3
QCMB1814	18"x14"				4
QCMB2014	20"x14"				5
QCMB2214	22"x14"				6
QCMB2414	24"x14"				8
QCMB2614	26"x14"				10
QCMB2814	28"x14"				16
QCMB3014	30"x14"				18
QCMB3214	32"x14"				20

\*For 5 Lacquering Finishes: TK, DW, ET, HW, UM

See page 18 for more hardware and finish options.  
See page 19-20 for carrier and stands information.

# TENOR DRUMS

Quantum Mark II Multi-Tenors were developed in cooperation with top competitive marching ensembles to meet the demands of the modern activity. While the acclaimed maple/walnut shell remains key to the Quantum tenor sound, all Mark II versions are thinner to reduce carrying weight and have enhanced reinforcing rings to ensure shell integrity. All Quantum Mark II tenors utilize the revolutionary RANDALL MAY Free-Floating Lug Bridge (FFLB) mounting system, which provides stability and future set-up flexibility, while enhancing resonance and further reducing the overall weight of the array.



**QCNT680234**

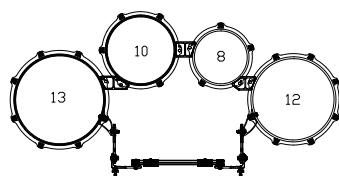


**QFNT680234**

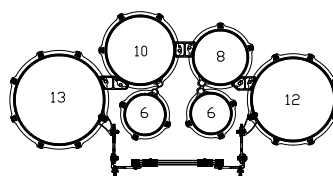
- All tenor drums feature a thinner blended shell to reduce weight and have enhanced reinforcing rings to ensure shell integrity.
- The Free-Floating Lug Bridge (FFLB) mounting system, provides stability and future set-up flexibility, eliminates the need for additional drilling and extra hardware.



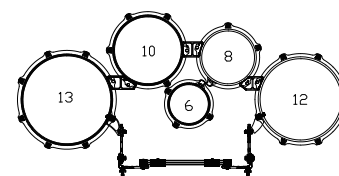
## CONFIGURATIONS



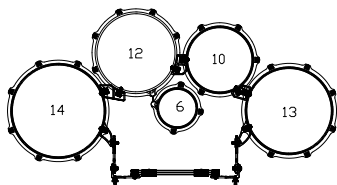
8023



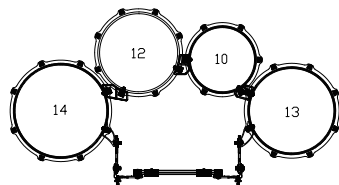
668023



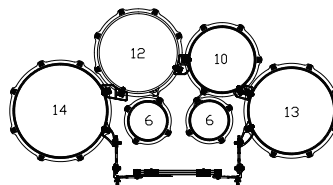
68023



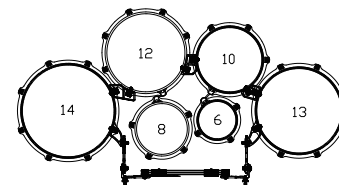
60234



0234



660234



680234

## SHOT DRUMS

Model	Shell Sizes	Shell Composition	Bearing Edge	Outer Plies	Interior Piles	Hoops	Heads
QTM0606	6"x6"	6 ply, 5.8mm	Standard w/ slight counter-cut	Maple	Birch / Walnut / Maple	2.33 Power Hoop	Remo UT Pinstripe
QTM0607	6"x7"			*Olive Veneer over Maple			
QTM0806	8"x8"						

## CLASSIC

employ Deep Shells for maximum tone and projection. The Original Quantum bearing edges and 2.3mm traditional hoops produce the most open resonance of the Quantum Mark II tenor line-up.

Model	Shell Sizes	Shell Composition	Bearing Edge	Outer Plies	Middle Plies	Interior Piles	Hoops	Heads	Mounting System
QCNT0234	10"x10", 12"x12", 13"x12.5, 14"x13"	6 ply, 6.5mm	Standard w/ Slight Counter-cut	Maple *Olive Veneer over Maple	Maple	Walnut	Sonic Saver Hoops	Remo UT Pinstripe	Free-Floating Lug Bridge & Included Backrail
QCNT60234	6"x7", 10"x10", 12"x12", 13"x12.5", 14"x13"								
QCNT660234	6"x6", 6"x7", 10"x10", 12"x12", 13"x12.5", 14"x13"								
QCNT680234	6"x6", 8"x6", 10"x10", 12"x12", 13"x12.5", 14"x13"								

## CALIFORNIA CUT

feature Mid-Depth Shells that achieve the ideal balance between weight, tone and feel. Sonic Clear bearing edges and Sonic Saver hoops provide greater focus and tonal clarity, while making the drums easier to tune.

Model	Shell Sizes	Shell Composition	Bearing Edge	Outer Plies	Middle Plies	Interior Piles	Hoops	Heads	Mounting System
QFNT8023	8"x7.5", 10"x9.5", 12"x10.5", 13"x11"	6 ply, 5.8mm	SONICClear	Maple *Olive Veneer over Maple	Maple	Walnut	Sonic Saver Hoops	Remo UT Clear Heads	Free-Floating Lug Bridge & Included Backrail
QFNT68023	6"x6", 8"x7.5", 10"x9.5", 12"x10.5", 13"x11"								
QFNT668023	6"x6", 6"x7", 8"x7.5", 10"x9.5", 12"x10.5", 13"x11"								
QFNT0234	10"x9.5", 12"x10.5", 13"x11", 14"x11.5"								
QFNT60234	6"x7", 10"x9.5", 12"x10.5", 13"x11", 14"x11.5"								
QFNT660234	6"x6", 6"x7", 10"x9.5", 12"x10.5", 13"x11", 14"x11.5"								
QFNT680234	6"x6", 8"x6", 10"x9.5", 12"x10.5", 13"x11", 14"x11.5"								

\*For 5 Lacquering Finishes: TK, DW, ET, HW, UM

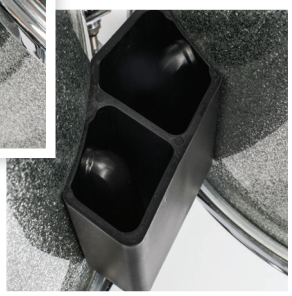
See page 18 for more hardware and finish options.  
See page 19-20 for carrier and stands information.

## Free Floating Lug Bridge for Quantum Mark II Tenors

The revolutionary patented Free Floating Lug Bridge (FFLB) mounting system suspends the drums from existing lug casing mounting locations, eliminating the need for additional drilling and extra hardware, as well as additional stress that typically impedes shell resonance.



Drum to drum connection are made via the lug casings themselves, encased in a lightweight polymer housing.



Connection of the outside drums to the backrail is accomplished through special lightweight aluminum integrated Free Floating Lug Bridge (FFLB) components that serve as both connector/spacer and lug casing.

Shot drum connectors replace adjacent lug casings from the shot drum and the 1 or 2 drums from the primary array, depending on the configuration. Each allows for independent height adjustment of the shot drum and ensures a level playing surface.





# QUALIFIER SERIES

The Mapex Qualifier Marching Drum Series offers traditional design and reliable function. The Qualifier Deluxe model snare drum supports high-tension with its aluminum bearing edge, cast hoops, full-length lugs and Pro snare strainer, while the standard models offer reduced weight and simplified function. Qualifier toms and bass drums offer high-strength, cast aluminum lugs for reliable tuning while keeping the weight manageable for younger players.

FLORIDA STATE UNIVERSITY

# SNARE DRUMS

The Qualifier series marching snare drums offer traditional design and reliable function. The Qualifier family of snare drums includes the Deluxe and Standard Models. The Deluxe model offers many of the same features of the Quantum series snares.


**QLS1310**

**QLS1412D**

- The Deluxe model supports high-tension with its aluminum edge ring, cast aluminum hoops and Pro snare strainer.
- The standard models offer reduced weight and simplified function.

Model	Shell Sizes	Shell Materials	Hoops	Lugs	Strainer	Snares	Batter Head	Snare Head
QLS1310	13"x10"	Maple / Birch	2.3mm Steel	8 Lugs, Cast Aluminum	Drumset Style	Nylon Gut	Remo UT Clear w/ Dot	Remo UX Clear
QLS1410	14"x10"			10 Lugs, Cast Aluminum				
QLS1412D	14"x12"	Maple/ Birch w/ Aluminum Edge Ring	Cast Aluminum	10 Lugs, Cast Aluminum				

\*Standard Hardware Finish: Gloss Chrome (CC)

Other Gloss covering options: Dark Black (DK), Crystal Sparkle (CK)  
See page 19-20 for carrier and stands information.

# BASS DRUMS

The Qualifier series marching bass drums offer traditional design and reliable function. Heavy duty tension rods and die-cast aluminum lugs are built to handle the stress of high-tension tunings.



**QLB2614, 2214, 1814**

- High-strength cast aluminum lugs for reliable tuning.
- Lightweight bass drums are suitable for younger players.

Model	Shell Sizes	Shell Material	Hoops	Lugs	Heads
QLB1614	16"x14"	Maple / Birch	Wood	8 Lugs, Cast Aluminum	Remo UM Smooth White
QLB1814	18"x14"				
QLB2014	20"x14"				
QLB2214	22"x14"			10 Lugs, Cast Aluminum	
QLB2414	24"x14"				
QLB2614	26"x14"				
QLB2814	28"x14"				

\*Standard Hardware Finish: Gloss Chrome (CC)

Other Gloss covering options: Dark Black (DK), Crystal Sparkle (CK)  
See page 19-20 for carrier and stands information.

# TENOR DRUMS

The Qualifier series marching tenor drums offer traditional design and reliable function. The maple/birch shells and specially designed cutaway produce a warm sound with power and presence.

**QLT023**



**QLT8023**

- The warmth sound of birch/maple shallow shells and specially designed cutaway.
- High-strength cast aluminum lugs for reliable tuning.

Model	Shell Sizes	Shell Material	Hoops	Lugs	Mounting System	Heads
QLT802 TRIO	8"x8", 10"x8", 12"x10"	Maple / Birch	1.66 mm Steel	5, 6, 6, Cast Aluminum	Standard Back Rail	Remo UT Clear
QLT023 TRIO	10"x8", 12"x10, 13"x11"			5, 6, 6, Cast Aluminum		
QLT8023 QUAD	8"x8", 10"x8", 12"x10, 13"x11"			5, 6, 6, 6, Cast Aluminum		
QLT68023 QUINT	6"x6", 8"x8", 10"x8", 12"x10, 13"x11"			4, 5, 6, 6, 6, Cast Aluminum		
QLT60234 QUINT	6"x6", 10"x8", 12"x10", 13"x11", 14"x12"			4, 6, 6, 6, 8, Cast Aluminum		

\*Standard Hardware Finish: Gloss Chrome (CC)

Other Gloss covering options: Dark Black (DK), Crystal Sparkle (CK)  
See page 19-20 for carrier and stands information.

# CONTENDER SERIES

The Contender series was designed as a light weight and affordable option for light duty marching applications.

## SNARE DRUMS

Contender snare drums are available in two configurations for use with either strap or carrier.



**CSS1210**



**CSC1310**

- All poplar shell features in a warm and musical sound.
- Hardware is with simple, time-tested design for reliable performance and easy maintenance.
- Available in two configurations for use with either strap or aluminum carrier.

Model	Sizes	Shell Materials	Hoops	Batter Head	Snare Head	Style
CSC1310	13"x10"	All Poplar Shell	1.6mm Steel Hoops	Remo UX Clear Heads	Remo UM Smooth White Heads	Carrier
CSC1311	13"x11"					
CSC1410	14"x10"					
CSC1412	14"x12"					
CSS1210	12"x10"					
CSS1310	13"x10"					Strap
CSS1406	14"x6"					
CSS1410	14"x10"					
CSS1412	14"x12"					

\*Standard Hardware Finish: Gloss Chrome (CC)

Standard Shell Finish: Snow White (SW)  
See page 19-20 for carrier and stands information.



# BASS DRUMS

Contender bass drums are available in two configurations for use with either strap or carrier and six diameters with a choice of two shell depths to fill the needs of ensembles requiring various.



**CBS2614, 2214, 1814**

- All poplar shell features in a warm and musical sound.
- Six diameters with a choice of two shell depths.
- Available in two configurations for use with either strap or aluminum carrier.

Model	Sizes	Shell Material	Hoops	Batter Head	Snare Head	Style
CBC1814	18"X14"	All Poplar Shell	Poplar Hoops	Remo UM Smooth White Heads		Carrier
CBC2014	20"X14"					
CBC2214	22"X14"					
CBC2414	24"X14"					
CBC2614	26"X14"					
CBS1610	16"X10"					Strap
CBS1810	18"X10"					
CBS2010	20"X10"					
CBS2210	22"X10"					
CBS2410	24"X10"					
CBS2610	26"X10"					
CBS1814	18"X14"					
CBS2014	20"X14"					
CBS2214	22"X14"					
CBS2414	24"X14"					
CBS2614	26"X14"					

\*Standard Hardware Finish: Gloss Chrome (CC)

Standard Shell Finish: Snow White (SW)  
See page 19-20 for carrier and stands information.

# TENOR DRUMS

Contender tenor drums are available in both trio and quad configurations in a shallow shell depth that strikes a balance between weight and tone.



**CT8023**

- All poplar shell features in a warm and musical sound.
- The cutaway shell design produce maximum forward projection of tone.

Model	Shell Sizes	Shell Material	Hoops	Batter Head	Style
CT023	10"x8", 12"x10", 13"x11"	All Poplar Shell	1.6mm Steel Hoops	Remo UX Clear Heads	Carrier
CT8023	8"x8", 10"x8", 12"x10", 13"x11"				

\*Standard Hardware Finish: Gloss Chrome (CC)

Standard Shell Finish: Snow White (SW)  
See page 19-20 for carrier and stands information.

# HARDWARE & FINISH OPTIONS



Quantum Mark II Marching Drums come in a selection of popular shell finishes and hardware options. Further customization is available by matching one of the three hardware finishes with Standard or Special Order shell finishes.

## Hardware Options:

### Standard Hardware



Gloss Chrome  
(CC)

### Special Hardware



Black  
(BK)



White  
(WH)

## Shell Finish Options:

### Standard Shell Finish

#### Covering Finish



Snow White  
(SW)



Dark Black  
(DK)



Crystal Sparkle  
(CK)

\*Shown with Standard Gloss Chrome hardware

## Special Shell Finish

### Lacquering Finish



Black Dawn  
(TK)



Desert Dune  
(DW)



Rainforest Burst  
(ET)



Rose Burst  
(HW)



Ultramarine  
(UM)



Gold Sparkle Burst  
(LW)

\*Shown with Standard Gloss Chrome hardware

### Lacquering with Sparkle Finish

## QUALIFIER SERIES

### Standard Hardware



Gloss Chrome  
(CC)

### Standard Shell Finish

#### Covering Finish



Snow White  
(SW)

### Optional Shell Finish

#### Covering Finish



Dark Black  
(DK)



Crystal Sparkle  
(CK)

### Standard Hardware



Gloss Chrome  
(CC)

### Standard Shell Finish

#### Covering Finish



Snow White  
(SW)

## CONTENDER SERIES

## CARRIERS

Mapex offers Vest and T-Type carriers and tripod stands for simplified function along with reliability.



**MVSD-MPN**



**MVQD-MPN**



**MVBD-MPN**



**MVBD-MPN**



**QLH01**



**QLH02**



**QLH03**

### QUANTUM SERIES

Model	Description
MVSD-MPN	Mapex snare drum carrier with MVSD (free floating snare attachment) for Quantum Mark II high tension snare drums and features adjustable height belly plate, adjustable width shoulder plates, and no-slip easy adjusting aluminum J-arm brackets.
MVQD-MPN	Mapex tenor drum carrier features adjustable height belly plate, adjustable width shoulder plates, and no-slip easy adjusting aluminum J-arm brackets, for Quantum Mark II tenor drums.
MVBD-MPN	Mapex bass drum carrier with bass drum attachment for Quantum Mark II bass drums and features adjustable height belly plate, adjustable width shoulder plates, and no-slip easy adjusting aluminum J-arm brackets.
MVSN-MPN	Mapex snare drum carrier features adjustable height belly plate, no-slip easy adjusting aluminum J-arm brackets and comfortable shoulder plates, for SK models of Quantum snare drum.
MVSA	Free floating snare attachment allows for front to back and side to side adjustment of the playing angle.

### QUALIFIER SERIES

Model	Description
QLH01	Mapex offers T-Type carriers for simplified function and reliability and features adjustable height belly plate, no-slip easy adjusting aluminum J-arm brackets, for Qualifier snare drums.
QLH02	Mapex offers T-Type carriers for simplified function and reliability and features adjustable height belly plate, no-slip easy adjusting aluminum J-arm brackets, for Qualifier bass drums.
QLH03	Mapex offers T-Type carriers for simplified function and reliability and features adjustable height belly plate, no-slip easy adjusting aluminum J-arm brackets, for Qualifier tenor drums.

# STANDS



**XS750A**



**XT750A**



**XB750A**

Model	Description
XS750A	Basket style snare stand by Mapex
XT750A	Marching Multi-Tom stand by Mapex
XB750A	Marching Bass drum stand by Mapex

# ACCESSORIES

Model	Description
MDK100	Marching drum key, large high-tension t-wrench
MMSB1	Single marching stick bag. Black nylon with velcro straps, plastic reinforced lip for quick implement changes.
MMSB2	Double marching stick bag. Black nylon with velcro straps, plastic reinforced lip for quick implement changes.



# STUDENT PERCUSSION KITS

Mapex student percussion kits feature bags with greater durability and enhanced style, and easy to access bar-coded serial numbers on the bells. The bell to stand interface is simplified and provides greater security, while the new note identification accessory makes it easy to practice with or without visible note names.



MCK1432DP



MPK32P



**MPK32PC**



**MSK14DC**



**MSK14D**

Model	Bell Key Board	Drum Pad	Snare Drum	Case
MCK143ZDP	2 ½ Octaves F5-C8	8" TUNABLE	14"X3.5", TEN LUG CHROME	Nylon w/ Integrated Wheels & Handle
MPK32P			—	Nylon Backpack
MPK32PC			—	Nylon w/ Integrated Wheels & Handle
MSK14D	—	GLADSTONE -TYPE	14"X5", TEN LUG CHROME	Nylon Backpack
MSK14DC				Nylon w/ Integrated Wheels & Handle



FOR MORE INFORMATION, VISIT  
[MAPEXDRUMS.COM/INTERNATIONAL/](https://mape drums.com/international/)

Specifications are subject to change without notice  
Version 2024/01 .INT