



MARCHING CATALOG

CONTENTS

Mapex Marching Drums

Hardware & Finish Options 3

Quantum Mark II Series

▶ Snare Drums 5

▶ Bass Drums 7

▶ Tenor Drums 9

Qualifer Series

▶ Snare Drums 14

▶ Bass Drums 15

▶ Tenor Drums 16

Contender Series

▶ Snare Drums 17

▶ Bass Drums 18

▶ Tenor Drums 19

Carriers 21

Stands & Accessories 22

Student Percussion Kits 23





HARDWARE & FINISH OPTIONS



Quantum Mark II Marching Drums come in a selection of popular shell finishes and hardware options. Further customization is available by matching one of the three hardware finishes with Standard or Special Order shell finishes.

Hardware Options:

Standard Hardware



Gloss Chrome
(CC)

Special Hardware



Black
(BK)



White
(WH)

Shell Finish Options:

Covering Finish



Snow White
(SW)



Dark Black
(DK)



Crystal Sparkle
(CK)

*Shown with Standard Gloss Chrome hardware

Lacquering Finish



Black Dawn
(TK)



Desert Dune
(DW)



Rainforest Burst
(ET)



Rose Burst
(HW)



Ultramarine
(UM)



Gold Sparkle Burst
(LW)

*Shown with Standard Gloss Chrome hardware

Lacquering with Sparkle Finish

QUALIFIER SERIES

Standard Hardware



Gloss Chrome
(CC)

Standard Shell Finish

Covering Finish



Snow White
(SW)



Dark Black
(DK)



Crystal Sparkle
(CK)

Standard Hardware



Gloss Chrome
(CC)

Standard Shell Finish

Covering Finish



Snow White
(SW)

CONTENDER SERIES



Quantum Mk II

Quantum Mk II Marching Drums offers unique features found nowhere else. The Mapex SONIClear™ bearing edge design enhances a fundamental tone and makes tuning easier than ever. The lightweight connectors on the tenor drums add stability while reducing overall weight. The revolutionary externally adjustable bass drum eyebolt facilitates easy, convenient adjustment. These forward-thinking appointments remind you that with Quantum Mk II, it keeps getting better.

SNARE DRUMS

The Quantum Mark II family of marching snare drums includes the Classic and Agility models. The Quantum Mark II Classic Snare Drum features an all-maple shell for a warm overall sound, a unique snare bed that provides superior snare response, and a rugged full-size design for maximum projection.



QAMX1410S



QCMX1412S

- Innovative new design features a quick release mechanism which enables the snares to be disengaged or detached to facilitate quick bottom head changes, requiring no readjustment of snare strand tension.
- Individual snare strands can be fine-tuned with a standard drum key and can also be easily removed or replaced with alternate strand materials to create a customized sound.
- A thinner maple shell provides optimum balance between resonance and focus with the added benefit of reduced weight.

Quick Release Mechanism

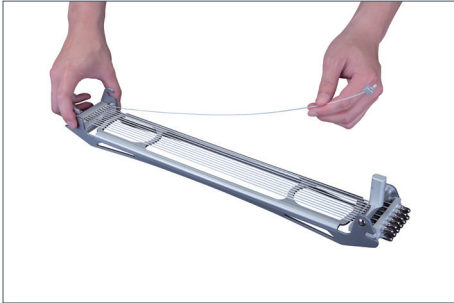


On



Off

Individual Gut Adjustment



	CLASSIC	AGILITY
SHELL SIZES	14"x12"	14"x10"
MODEL	QCMX1412S-xx-CC (single snare drum)	QAMX1410S-xx-CC (single snare drum)
	QCMX1412S-xx-CC-F (single snare drum w/ high tension drum head)	QAMX1410S-xx-CC-F (single snare drum w/ high tension drum head)
SHELL MATERIALS	Maple *Olive Veneer over Maple	Maple *Olive Veneer over Maple
LUGS	12 lugs, suspension frame	12 lugs, suspension frame
BATTER HEAD	Remo UT Clear w/Dot High Tension: Remo White Max	Remo UT Clear w/Dot High Tension: Remo White Max
SNARE HEAD	Remo UX Clear	Remo UX Clear
	High Tension: Remo Falams XT Smooth White	High Tension: Remo Falams XT Smooth White

*For 6 Lacquering Finishes: TK, DW, IM, ET, HW, UM

See page 3 for more hardware and finish options.
See page 21-22 for carrier and stands information.

BASS DRUMS

Quantum Mark II Bass Drum features a maple shell and a consistent 14" shell depth throughout the lineup. New externally adjustable eyebolt system allows for easy eyebolt height adjustment to suit each individual player without removing drumheads.



- The maple shell with SONIClear bearing edges provides a warm and full resonant tone with enhanced reinforcing rings for strength and durability.
- Externally adjustable eyebolt system to easily suit each individual player without removing drumheads.
- A specific number of airvents is featured on each model graduated through the bass drum line with a consistent focused tone and to attenuate the sustain.
- SONIClear bearing edge allows the drumhead to sit flatter and make better contact with the shell.



SONIClear bearing edges



Adjustable eyebolt system

Model	Shell Sizes	Shell Material	Bearing Edge	Hoops	Air Vents
QCMB1414	14"x14"	Maple w/ Birch Reinforcing Rings	SONIClear	Aluminum Alloy	2
QCMB1614	16"x14"				3
QCMB1814	18"x14"				4
QCMB2014	20"x14"				5
QCMB2214	22"x14"				6
QCMB2414	24"x14"	*Olive Veneer over Maple w/ Birch Reinforcing Rings	SONIClear	Aluminum Alloy	8
QCMB2614	26"x14"				10
QCMB2814	28"x14"				16
QCMB3014	30"x14"				18
QCMB3214	32"x14"				20

*For 6 Lacquering Finishes: TK, DW, IM, ET, HW, UM

See page 3 for more hardware and finish options.
See page 21-22 for carrier and stands information.

TENOR DRUMS

Quantum Mark II Multi-Tenors were developed in cooperation with top competitive marching ensembles to meet the demands of the modern activity. While the acclaimed maple/walnut shell remains key to the Quantum tenor sound, all Mark II versions are thinner to reduce carrying weight and have enhanced reinforcing rings to ensure shell integrity.

All Quantum Mark II tenors utilize the revolutionary RANDALL MAY Free-Floating Lug Bridge (FFLB) mounting system, which provides stability and future set-up flexibility, while enhancing resonance and further reducing the overall weight of the array.



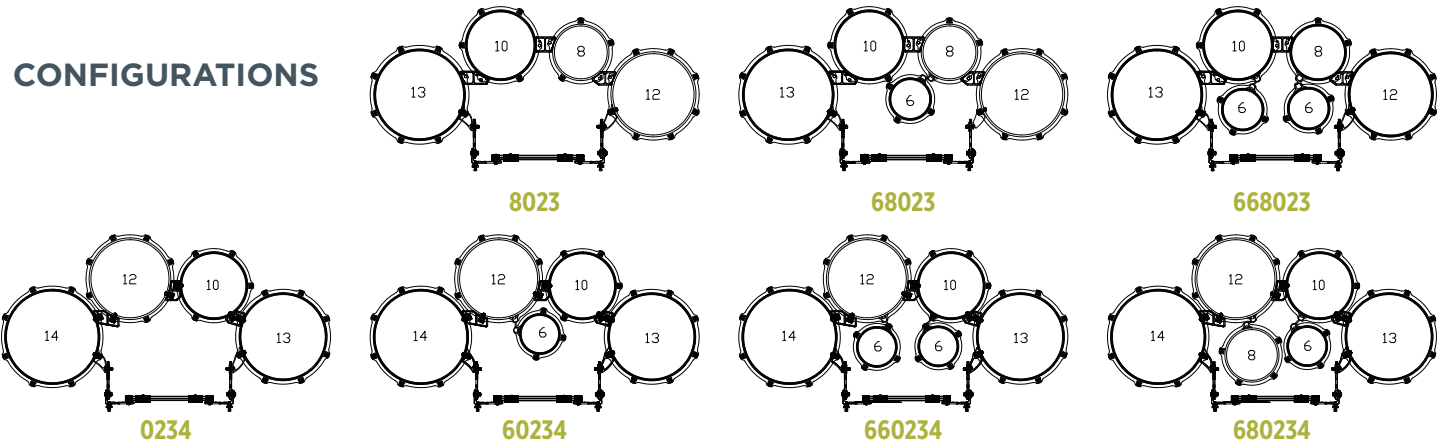
QCNT680234



QFNT680234

- All tenor drums feature a thinner blended shell to reduce weight and have enhanced reinforcing rings to ensure shell integrity.
- The Free-Floating Lug Bridge (FFLB) mounting system, provides stability and future set-up flexibility, eliminates the need for additional drilling and extra hardware.

CONFIGURATIONS



SHOT DRUMS

Model	Shell Sizes	Bearing Edge	Outer Plies	Middle Plies	Interior Plies	Hoops	Heads
QTM0606	6"x6"	Standard w/ slight counter-cut	Maple	Birch	Birch	Power Hoops	Remo UT Pinstripe
QTM0607	6"x7"		*Olive Veneer over Maple	Maple	Walnut		
QTM0806	8"x8"				Maple		

CLASSIC

employ Deep Shells for maximum tone and projection. The Original Quantum bearing edges and traditional hoops produce the most open resonance of the Quantum Mark II tenor line-up.

Model	Shell Sizes	Bearing Edge	Outer Plies	Middle Plies	Interior Plies	Hoops	Heads	Mounting System
QCNT0234	10"x10", 12"x12", 13"x12.5", 14"x13"	Standard w/ Slight Counter-cut	Maple *Olive Veneer over Maple	Maple	Walnut	Power Hoops	Remo UT Pinstripe	Free-Floating Lug Bridge & Included Backrail
QCNT60234	6"x7", 10"x10", 12"x12", 13"x12.5", 14"x13"							
QCNT660234	6"x6", 6"x7", 10"x10", 12"x12", 13"x12.5", 14"x13"							
QCNT680234	6"x6", 8"x6", 10"x10", 12"x12", 13"x12.5", 14"x13"							

CALIFORNIA CUT

feature Mid-Depth Shells that achieve the ideal balance between weight, tone and feel. Sonic Clear bearing edges and Sonic Saver hoops provide greater focus and tonal clarity, while making the drums easier to tune.

Model	Shell Sizes	Bearing Edge	Outer Plies	Middle Plies	Interior Plies	Hoops	Heads	Mounting System
QFNT8023	8"x7.5", 10"x9.5", 12"x10.5", 13"x11"	SONICClear	Maple *Olive Veneer over Maple	Maple	Walnut	Sonic Saver Hoops	Remo UT Pinstripe	Free-Floating Lug Bridge & Included Backrail
QFNT68023	6"x6", 8"x7.5", 10"x9.5", 12"x10.5", 13"x11"							
QFNT668023	6"x6", 6"x7", 8"x7.5", 10"x9.5", 12"x10.5", 13"x11"							
QFNT0234	10"x9.5", 12"x10.5", 13"x11", 14"x11.5"							
QFNT60234	6"x7", 10"x9.5", 12"x10.5", 13"x11", 14"x11.5"							
QFNT660234	6"x6", 6"x7", 10"x9.5", 12"x10.5", 13"x11", 14"x11.5"							
QFNT680234	6"x6", 8"x6", 10"x9.5", 12"x10.5", 13"x11", 14"x11.5"							

*For 6 Lacquering Finishes: TK, DW, IM, ET, HW, UM

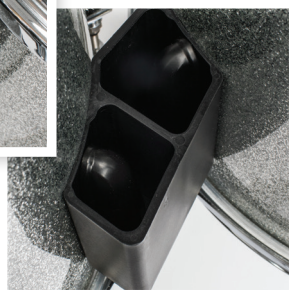
See page 3 for more hardware and finish options.
See page 21-22 for carrier and stands information.

Free Floating Lug Bridge for Quantum Mark II Tenors

The revolutionary patented Free Floating Lug Bridge (FFLB) mounting system suspends the drums from existing lug casing mounting locations, eliminating the need for additional drilling and extra hardware, as well as additional stress that typically impedes shell resonance.



Drum to drum connection are made via the lug casings themselves, encased in a lightweight polymer housing.



Connection of the outside drums to the backrail is accomplished through special lightweight aluminum integrated Free Floating Lug Bridge (FFLB) components that serve as both connector/spacer and lug casing.

Shot drum connectors replace adjacent lug casings from the shot drum and the 1 or 2 drums from the primary array, depending on the configuration. Each allows for independent height adjustment of the shot drum and ensures a level playing surface.





QUALIFIER SERIES

The Mapex Qualifier Marching Drum Series offers traditional design and reliable function. The Qualifier Deluxe model snare drum supports high-tension with its aluminum bearing edge, cast hoops, full-length lugs and Pro snare strainer, while the standard models offer reduced weight and simplified function. Qualifier toms and bass drums offer high-strength, cast aluminum lugs for reliable tuning while keeping the weight manageable for younger players.

FLORIDA STATE UNIVERSITY

SNARE DRUMS

The Qualifier series marching snare drums offer traditional design and reliable function. The Qualifier family of snare drums includes the Deluxe and Standard Models. The Deluxe model offers many of the same features of the Quantum series snares.



QLS1310



QLS1412D

- The Deluxe model supports high-tension with its aluminum edge ring, cast aluminum hoops and Pro snare strainer.
- The standard models offer reduced weight and simplified function.

Model	Shell Sizes	Shell Materials	Hoops	Lugs	Strainer	Snares	Batter Head	Snare Head
QLS1310	13"x10"	Maple / Birch	Steel	8 Lugs, Cast Aluminum	Drumset Style	Wire Snare	Remo UT Clear w/ Dot	Remo UX Clear
QLS1410	14"x10"			10 Lugs, Cast Aluminum				
QLS1412D	14"x12"	Maple/ Birch w/ Aluminum Edge Ring	Cast Aluminum	10 Lugs, Cast Aluminum	Pro Marching	Nylon Gut		

See page 3 for more finish options.
See page 21-22 for carrier and stands information.

BASS DRUMS

The Qualifier series marching bass drums offer traditional design and reliable function. Heavy duty tension rods and die-cast aluminum lugs are built to handle the stress of high-tension tunings.



QLB2614, 2214, 1814

- High-strength cast aluminum lugs for reliable tuning.
- Lightweight bass drums are suitable for younger players.

Model	Shell Sizes	Shell Material	Hoops	Lugs	Heads
QLB1614	16"x14"	Maple / Birch	Maple/Birch	8 Lugs, Cast Aluminum	Remo UX Smooth White
QLB1814	18"x14"				
QLB2014	20"x14"				
QLB2214	22"x14"			10 Lugs, Cast Aluminum	Remo UT Smooth White
QLB2414	24"x14"				
QLB2614	26"x14"				
QLB2814	28"x14"				

See page 3 for more finish options.
See page 21-22 for carrier and stands information.

TENOR DRUMS

The Qualifier series marching tenor drums offer traditional design and reliable function. The maple/birch shells and specially designed cutway produce a warm sound with power and presence.

QLT023



QLT8023



- The warmth sound of maple/birch shallow shells and specially designed cutaway.
- High-strength cast aluminum lugs for reliable tuning.

Model	Shell Sizes	Shell Material	Hoops	Lugs	Mounting System	Heads
QLT802 TRIO	8"x8", 10"x8", 12"x10	Maple / Birch	Steel	5, 6, 6, Cast Aluminum	Standard Backrail	Remo UT Clear
QLT023 TRIO	10"x8", 12"x10, 13"x11"			6, 6, 6 Cast Aluminum		
QLT8023 QUAD	8"x8", 10"x8", 12"x10, 13"x11"			5, 6, 6, 6, Cast Aluminum		
QLT68023 QUINT	6"x8", 8"x8", 10"x8", 12"x10, 13"x11"			4, 5, 6, 6, 6, Cast Aluminum		
QLT60234 QUINT	6"x8", 10"x8", 12"x10", 13"x11", 14"x12"			4, 6, 6, 6, 8, Cast Aluminum		

See page 3 for more finish options.
See page 21-22 for carrier and stands information.

CONTENDER SERIES

The Contender series was designed as a light weight and affordable option for light duty marching applications.

SNARE DRUMS

Contender snare drums are available in two configurations for use with either strap or carrier.



CSS1210



CSC1310

- All poplar shell features in a warm and musical sound.
- Hardware is with simple, time-tested design for reliable performance and easy maintenance.
- Available in two configurations for use with either strap or aluminum carrier.

Model	Sizes	Shell Materials	Hoops	Batter Head	Snare Head	Style
CSC1310	13"x10"	Poplar	Steel Hoops	Remo UX Smooth White	Remo UX Clear	Carrier
CSC1311	13"x11"					
CSC1410	14"x10"					
CSC1412	14"x12"					
CSS1210	12"x10"					
CSS1310	13"x10"					Strap
CSS1406	14"x6"					
CSS1410	14"x10"					
CSS1412	14"x12"					

Standard Shell Finish: Snow White (SW)

Standard Hardware Finish: Gloss Chrome (CC)

See page 21-22 for carrier and stands information.

BASS DRUMS

Contender bass drums are available in two configurations for use with either strap or carrier and six diameters with a choice of two shell depths to fill the needs of ensembles requiring various.



CBS2614, 2214, 1814

- All poplar shell features in a warm and musical sound.
- Six diameters with a choice of two shell depths.
- Available in two configurations for use with either strap or aluminum carrier.

Model	Sizes	Shell Material	Hoops	Heads	Style
CBC1814	18"X14"	Poplar	Maple/Birch	16"-24": Remo UX Smooth White 26": Remo UT Smooth White	Carrier
CBC2014	20"X14"				
CBC2214	22"X14"				
CBC2414	24"X14"				
CBC2614	26"X14"				
CBS1610	16"X10"				Strap
CBS1810	18"X10"				
CBS2010	20"X10"				
CBS2210	22"X10"				
CBS2410	24"X10"				
CBS2610	26"X10"				
CBS1814	18"X14"				
CBS2014	20"X14"				
CBS2214	22"X14"				
CBS2414	24"X14"				
CBS2614	26"X14"				

Standard Shell Finish: Snow White (SW)
Standard Hardware Finish: Gloss Chrome (CC)
See page 21-22 for carrier and stands information.

TENOR DRUMS

Contender tenor drums are available in both trio and quad configurations in a shallow shell depth that strikes a balance between weight and tone.



CT8023

- All poplar shell features in a warm and musical sound.
- The cutaway shell design produce maximum forward projection of tone.

Model	Shell Sizes	Shell Material	Hoops	Batter Head	Style
CT023	10"x8", 12"x10", 13"x11"	Poplar	Steel	Remo UX Clear	Carrier
CT8023	8"x8", 10"x8", 12"x10", 13"x11"				

Standard Shell Finish: Snow White (SW)
Standard Hardware Finish: Gloss Chrome (CC)
See page 21-22 for carrier and stands information.

MATRIX



CARRIERS

Mapex offers Vest and T-Type carriers and tripod stands for simplified function along with reliability.



MVSD-MPN



MVQD-MPN



MVBD-MPN
w/ bass drum attachment



w/ bass drum hook



QLH01



QLH02



QLH03

QUANTUM SERIES

Model	Description
MVSD-MPN	Vest carrier for Quantum Mark II high tension snare drums, with MVSA (free floating snare attachment), features adjustable height belly plate, adjustable width shoulder plates, and no-slip easy adjusting aluminum J-arm brackets.
MVQD-MPN	Vest carrier for Quantum Mark II tenor drums, features adjustable height belly plate, adjustable width shoulder plates, and no-slip easy adjusting aluminum J-arm brackets.
MVBD-MPN	Vest carrier for Quantum Mark II bass drums, with bass drum attachment, features adjustable height belly plate, adjustable width shoulder plates, and no-slip easy adjusting aluminum J-arm brackets.
MVSN-MPN	Vest carrier for Quantum Mark II high tension snare drums, without MVSA (free floating snare attachment), features adjustable height belly plate, adjustable width shoulder plates, and no-slip easy adjusting aluminum J-arm brackets.
MVSA	Free floating snare attachment allows for front to back and side to side adjustment of the playing angle.

QUALIFIER SERIES

Model	Description
QLH01	T-Type carrier for Qualifier snare drums, simplified function and reliability, features adjustable height belly plate, and no-slip easy adjusting aluminum J-arm brackets.
QLH02	T-Type carrier for Qualifier bass drums, simplified function and reliability, features adjustable height belly plate, and no-slip easy adjusting aluminum J-arm brackets.
QLH03	T-Type carrier for Qualifier tenor drums, simplified function and reliability, features adjustable height belly plate, and no-slip easy adjusting aluminum J-arm brackets.

STANDS



XS750A



XT750A



XB750A

Model	Description
XS750A	Basket style snare stand
XT750A	Marching Multi-Tom stand
XB750A	Marching Bass drum stand

ACCESSORIES

Model	Description
MDK100	Marching drum key, large high-tension t-wrench
MMSB1	Single marching stick bag. Black nylon with velcro straps, plastic reinforced lip for quick implement changes.
MMSB2	Double marching stick bag. Black nylon with velcro straps, plastic reinforced lip for quick implement changes.



STUDENT PERCUSSION KITS

Mapex student percussion kits feature bags with greater durability and enhanced style, and easy to access bar-coded serial numbers on the bells. The bell to stand interface is simplified and provides greater security, while the new note identification accessory makes it easy to practice with or without visible note names.



MCK1432DP



MPK32P



MPK32PC



MSK14DC



MSK14D

Model	Bell Key Board	Drum Pad	Snare Drum	Case
MCK143ZDP	2 ½ Octaves F5-C8	8" Tunable	14"x3.5", 10 Lugs	Nylon w/ Integrated Wheels & Handle
MPK32P			—	Nylon Backpack
MPK32PC				Nylon w/ Integrated Wheels & Handle
MSK14D	—	Gladstone-Type	14"x5.5", 10 Lugs	Nylon Backpack
MSK14DC				Nylon w/ Integrated Wheels & Handle



FOR MORE INFORMATION, VISIT
[MAPEXDRUMS.COM/INTERNATIONAL/](https://mape drums.com/international/)